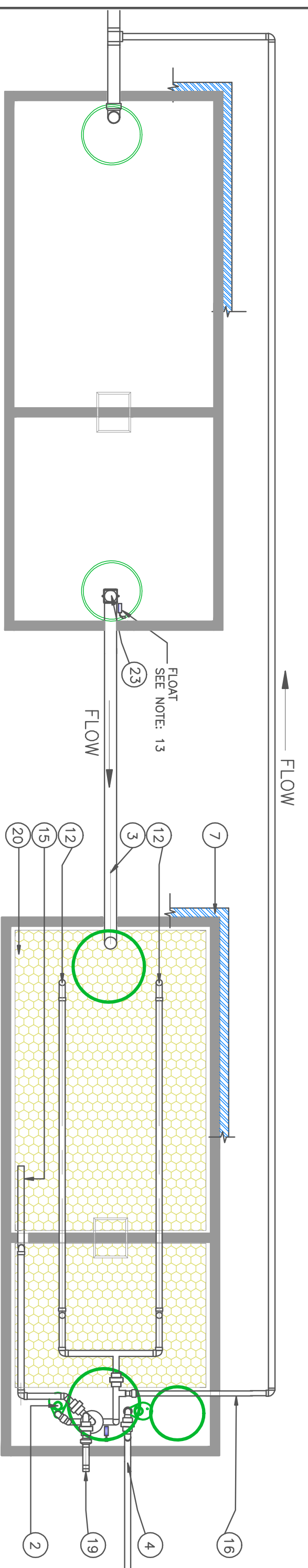
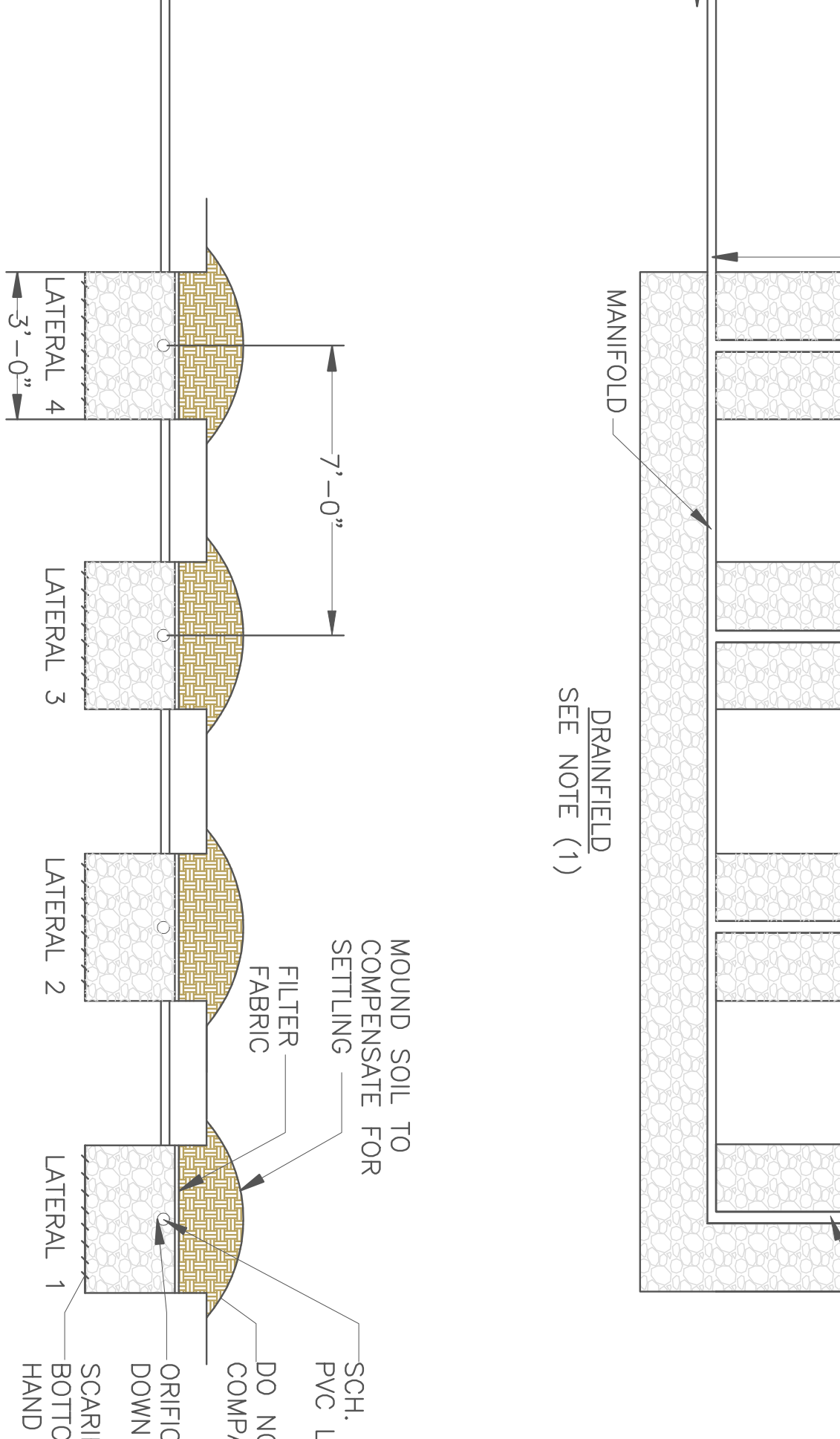
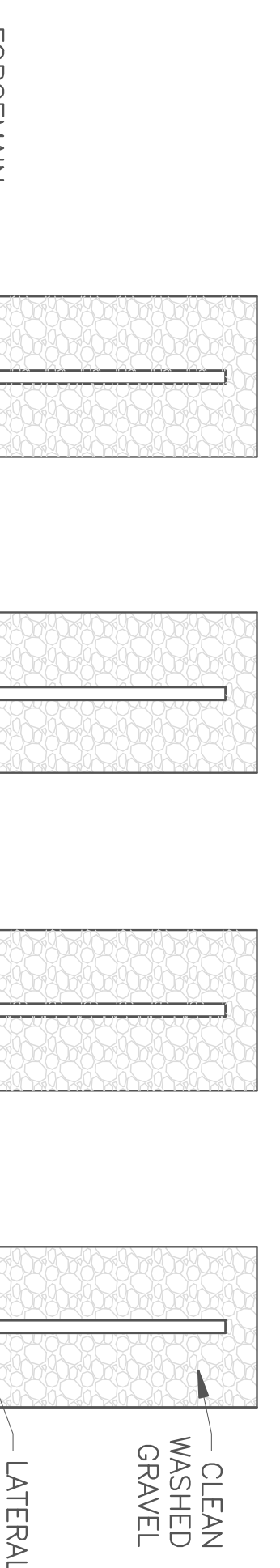
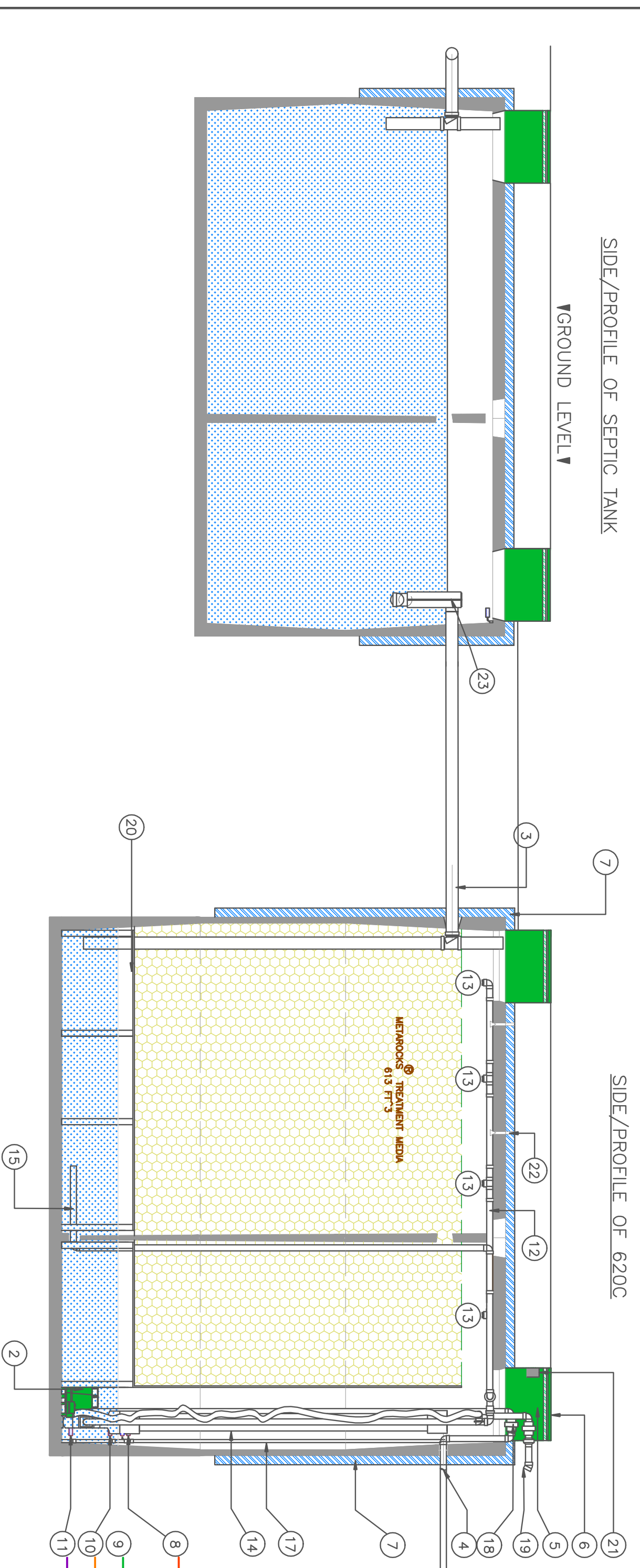


TOP VIEW OF SEPTIC TANK



TOP VIEW OF 620C



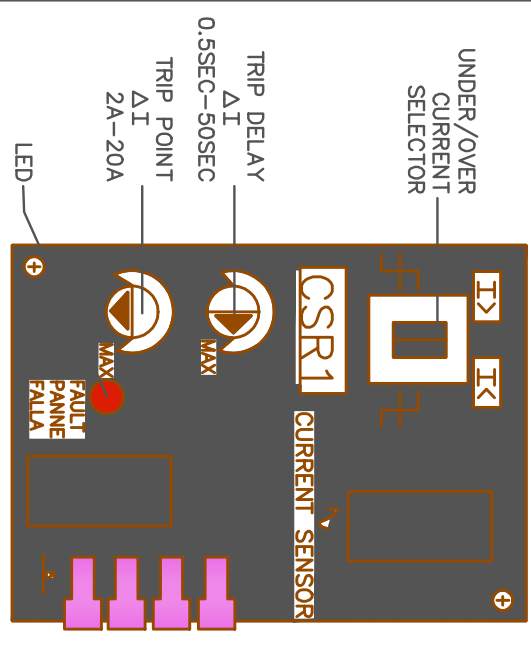
SCHEDULE OF PARTS

NO.	DESCRIPTION
1	RECIRCULATION PUMP
2	DISCHARGE PUMP
3	INLET 4" DIA SCH 40 PVC
4	DISCHARGE 2" DIA SCH 40 PVC
5	POLYLOCK RISER 24" DIA
6	POLYLOCK LID W/ INSULATION
7	SUBGRADE INSULATION 2" THICK MIN
8	HIGH LEVEL ALARM FLOAT SWITCH
9	DRAINFIELD PUMP ON FLOAT SWITCH
10	DRAINFIELD PUMP OFF FLOAT SWITCH
11	LOW LEVEL OFF SWITCH
12	SPRAY BAR ASSEMBLY
13	SPRAY NOZZLE
14	LUNG AIR ENTRAPMENT DEVICE
15	AIR DISCHARGE LINE
16	DENITRIFICATION RETURN LINE
17	FLOAT STAND
18	QUICK RELEASE COUPLING
19	FRESH AIR INTAKE
20	MEYERROCK'S SUPPORT FRAME
21	ELECTRICAL JUNCTION BOX
22	SPRAY BAR SUPPORT CLAMP
23	EFFLUENT FILTER

TO AVOID DAMAGE TO NATURAL SOIL STRUCTURE, PERSONNEL OR MACHINERY SHALL NOT BE ALLOWED ON TRENCH BOTTOM

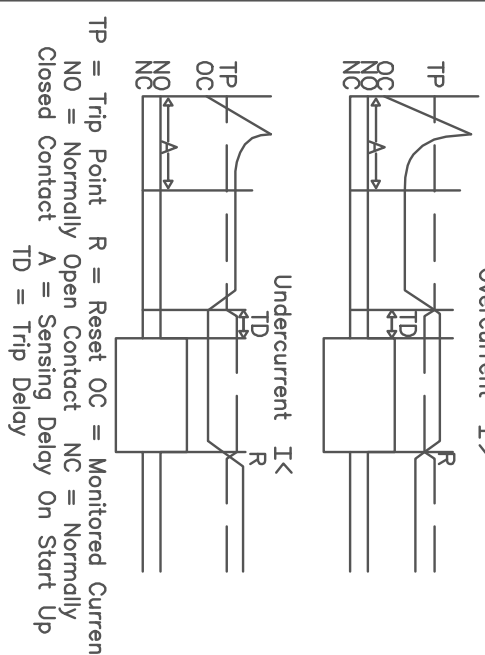
DIMENSIONED 620C

Description
The ESC S-Series of sensors is a universal, measurement of undercurrent sensing device. Contact our technical support department for more information. Use of float, on open holder or trip load, or probe on float stand.



Question
Input voltage must be supplied at all times for proper delay; the output relay is energized. When the current returns to the normal run condition, the output and connected before the trip delay is completed, the relay will not energize and the trip delay is reset to zero.
Set the trip point and trip delay to the appropriate level. The trip point is the monitored load turn adjustment and which the LED will light; turn slightly in opposite direction until LED is at the desired level of the trip delay is set to the control sensitivity of the trip delay is set to the maximum.

FUNCTION



ENCLOSURE

MOTOR

CONTRACTORS

ALARM LIGHT

SIEMENS LOGO! CONTROLLER

AGC TYPE HEATER FUSE BUSSMAN 0.5A

AGC BUSSMAN 2A

ELIMINITE PUMP (PUMP 1)

DRAINFIELD PUMP (PUMP 2)

INCOMING SERVICE MAIN SERVICE PANEL

PROVIDE SERVICE PANEL CIRCUITS AND PUMP CIRCUITS

RESET/TOGGLE SILENCE

RESETTING AN ELIMINITE PUMP FAILURE

CAUTION

WARNING

NECA 4X

20A CIRCUIT BREAKERS

ABB ESC SERIES CURRENT SENSOR

SIEMENS LOGO! CONTROLLER

AGC TYPE HEATER FUSE BUSSMAN 0.5A

AGC BUSSMAN 2A

ELIMINITE PUMP (PUMP 1)

DRAINFIELD PUMP (PUMP 2)

INCOMING SERVICE MAIN SERVICE PANEL

PROVIDE SERVICE PANEL CIRCUITS AND PUMP CIRCUITS

RESET/TOGGLE SILENCE

RESETTING AN ELIMINITE PUMP FAILURE

CAUTION

WARNING

NECA 4X

20A CIRCUIT BREAKERS

ABB ESC SERIES CURRENT SENSOR

SIEMENS LOGO! CONTROLLER

AGC TYPE HEATER FUSE BUSSMAN 0.5A

AGC BUSSMAN 2A

ELIMINITE PUMP (PUMP 1)

DRAINFIELD PUMP (PUMP 2)

INCOMING SERVICE MAIN SERVICE PANEL

PROVIDE SERVICE PANEL CIRCUITS AND PUMP CIRCUITS

RESET/TOGGLE SILENCE

RESETTING AN ELIMINITE PUMP FAILURE

CAUTION

WARNING

NECA 4X

20A CIRCUIT BREAKERS

ABB ESC SERIES CURRENT SENSOR

SIEMENS LOGO! CONTROLLER

AGC TYPE HEATER FUSE BUSSMAN 0.5A

AGC BUSSMAN 2A

ELIMINITE PUMP (PUMP 1)

DRAINFIELD PUMP (PUMP 2)

INCOMING SERVICE MAIN SERVICE PANEL

PROVIDE SERVICE PANEL CIRCUITS AND PUMP CIRCUITS

RESET/TOGGLE SILENCE

RESETTING AN ELIMINITE PUMP FAILURE

CAUTION

WARNING

NECA 4X

20A CIRCUIT BREAKERS

ABB ESC SERIES CURRENT SENSOR

SIEMENS LOGO! CONTROLLER

AGC TYPE HEATER FUSE BUSSMAN 0.5A

AGC BUSSMAN 2A

ELIMINITE PUMP (PUMP 1)

DRAINFIELD PUMP (PUMP 2)

INCOMING SERVICE MAIN SERVICE PANEL

PROVIDE SERVICE PANEL CIRCUITS AND PUMP CIRCUITS

RESET/TOGGLE SILENCE

RESETTING AN ELIMINITE PUMP FAILURE

CAUTION

WARNING

NECA 4X

20A CIRCUIT BREAKERS

ABB ESC SERIES CURRENT SENSOR

SIEMENS LOGO! CONTROLLER

AGC TYPE HEATER FUSE BUSSMAN 0.5A

AGC BUSSMAN 2A

ELIMINITE PUMP (PUMP 1)

DRAINFIELD PUMP (PUMP 2)

INCOMING SERVICE MAIN SERVICE PANEL

PROVIDE SERVICE PANEL CIRCUITS AND PUMP CIRCUITS

RESET/TOGGLE SILENCE

RESETTING AN ELIMINITE PUMP FAILURE

CAUTION

WARNING

NECA 4X

20A CIRCUIT BREAKERS

ABB ESC SERIES CURRENT SENSOR

SIEMENS LOGO! CONTROLLER

AGC TYPE HEATER FUSE BUSSMAN 0.5A

AGC BUSSMAN 2A

ELIMINITE PUMP (PUMP 1)

DRAINFIELD PUMP (PUMP 2)

INCOMING SERVICE MAIN SERVICE PANEL

PROVIDE SERVICE PANEL CIRCUITS AND PUMP CIRCUITS

RESET/TOGGLE SILENCE

RESETTING AN ELIMINITE PUMP FAILURE

CAUTION

WARNING

NECA 4X

20A CIRCUIT BREAKERS

ABB ESC SERIES CURRENT SENSOR

SIEMENS LOGO! CONTROLLER

AGC TYPE HEATER FUSE BUSSMAN 0.5A

AGC BUSSMAN 2A

ELIMINITE PUMP (PUMP 1)

DRAINFIELD PUMP (PUMP 2)

INCOMING SERVICE MAIN SERVICE PANEL

PROVIDE SERVICE PANEL CIRCUITS AND PUMP CIRCUITS

RESET/TOGGLE SILENCE

RESETTING AN ELIMINITE PUMP FAILURE

CAUTION

WARNING

NECA 4X

20A CIRCUIT BREAKERS

ABB ESC SERIES CURRENT SENSOR

SIEMENS LOGO! CONTROLLER

AGC TYPE HEATER FUSE BUSSMAN 0.5A

AGC BUSSMAN 2A

ELIMINITE PUMP (PUMP 1)

DRAINFIELD PUMP (PUMP 2)

INCOMING SERVICE MAIN SERVICE PANEL

PROVIDE SERVICE PANEL CIRCUITS AND PUMP CIRCUITS

RESET/TOGGLE SILENCE

RESETTING AN ELIMINITE PUMP FAILURE

CAUTION

WARNING

NECA 4X

20A CIRCUIT BREAKERS

ABB ESC SERIES CURRENT SENSOR

SIEMENS LOGO! CONTROLLER

AGC TYPE HEATER FUSE BUSSMAN 0.5A

AGC BUSSMAN 2A

ELIMINITE PUMP (PUMP 1)

DRAINFIELD PUMP (PUMP 2)

INCOMING SERVICE MAIN SERVICE PANEL

PROVIDE SERVICE PANEL CIRCUITS AND PUMP CIRCUITS

RESET/TOGGLE SILENCE

RESETTING AN ELIMINITE PUMP FAILURE

CAUTION

WARNING

NECA 4X

20A CIRCUIT BREAKERS

ABB ESC SERIES CURRENT SENSOR

SIEMENS LOGO! CONTROLLER

AGC TYPE HEATER FUSE BUSSMAN 0.5A

AGC BUSSMAN 2A

ELIMINITE PUMP (PUMP 1)

DRAINFIELD PUMP (PUMP 2)

INCOMING SERVICE MAIN SERVICE PANEL

PROVIDE SERVICE PANEL CIRCUITS AND PUMP CIRCUITS

RESET/TOGGLE SILENCE

RESETTING AN ELIMINITE PUMP FAILURE

CAUTION

WARNING

NECA 4X

20A CIRCUIT BREAKERS

ABB ESC SERIES CURRENT SENSOR

SIEMENS LOGO! CONTROLLER

AGC TYPE HEATER FUSE BUSSMAN 0.5A

AGC BUSSMAN 2A

ELIMINITE PUMP (PUMP 1)

DRAINFIELD PUMP (PUMP 2)

INCOMING SERVICE MAIN SERVICE PANEL

PROVIDE SERVICE PANEL CIRCUITS AND PUMP CIRCUITS

RESET/TOGGLE SILENCE

RESETTING AN ELIMINITE PUMP FAILURE

CAUTION

WARNING

NECA 4X

20A CIRCUIT BREAKERS

ABB ESC SERIES CURRENT SENSOR

SIEMENS LOGO! CONTROLLER

AGC TYPE HEATER FUSE BUSSMAN 0.5A

AGC BUSSMAN 2A

ELIMINITE PUMP (PUMP 1)

DRAINFIELD PUMP (PUMP 2)

INCOMING SERVICE MAIN SERVICE PANEL

PROVIDE SERVICE PANEL CIRCUITS AND PUMP CIRCUITS

RESET/TOGGLE SILENCE

RESETTING AN ELIMINITE PUMP FAILURE

CAUTION

WARNING

NECA 4X

20A CIRCUIT BREAKERS

ABB ESC SERIES CURRENT SENSOR

SIEMENS LOGO! CONTROLLER

AGC TYPE HEATER FUSE BUSSMAN 0.5A

AGC BUSSMAN 2A

ELIMINITE PUMP (PUMP 1)

DRAINFIELD PUMP (PUMP 2)

INCOMING SERVICE MAIN SERVICE PANEL

PROVIDE SERVICE PANEL CIRCUITS AND PUMP CIRCUITS

RESET/TOGGLE SILENCE

RESETTING AN ELIMINITE PUMP FAILURE

CAUTION

WARNING

NECA 4X

20A CIRCUIT BREAKERS

ABB ESC SERIES CURRENT SENSOR

SIEMENS LOGO! CONTROLLER

AGC TYPE HEATER FUSE BUSSMAN 0.5A

AGC BUSSMAN 2A

ELIMINITE PUMP (PUMP 1)

DRAINFIELD PUMP (PUMP 2)

INCOMING SERVICE MAIN SERVICE PANEL

PROVIDE SERVICE PANEL CIRCUITS AND PUMP CIRCUITS

RESET/TOGGLE SILENCE

RESETTING AN ELIMINITE PUMP FAILURE

CAUTION

WARNING

NECA 4X

20A CIRCUIT BREAKERS

ABB ESC SERIES CURRENT SENSOR

SIEMENS LOGO! CONTROLLER

AGC TYPE HEATER FUSE BUSSMAN 0.5A

AGC BUSSMAN 2A

ELIMINITE PUMP (PUMP 1)

DRAINFIELD PUMP (PUMP 2)

INCOMING SERVICE MAIN SERVICE PANEL

PROVIDE SERVICE PANEL CIRCUITS AND PUMP CIRCUITS

RESET/TOGGLE SILENCE

RESETTING AN ELIMINITE PUMP FAILURE

CAUTION

WARNING

NECA 4X